

MONTANA

LUXURY FIFTH WHEEL

**LUXURY THAT STARTS WITH
A SOLID FOUNDATION**



OVER 100K | **MONTANA**
FIFTH WHEELS ON
THE ROAD TODAY

When Cole Davis founded Keystone RV in 1996 his vision was clear: Build a quality RV loaded with features priced thousands less than other RVs on the market. To accomplish his goal, Cole built a strong team, focused on keeping overhead low, and empowered employees closest to the customer to make decisions. Within a few short months after opening the doors, Keystone produced its very first camper. Delivering big on quality, features and value, the public fell in love and a star was born.

As customer's appetite skyrocketed, new Keystone models were added to satisfy growing customer demand. Along with this tremendous growth came the need for expanded production. To meet this need, more manufacturing plants were built and staffed. By the beginning of 2000, Keystone was leading the industry in fifth wheel and trailer sales. Today, Keystone RV Company has grown to encompass over 1 million square feet of manufacturing space with facilities in Goshen, Indiana and Pendleton, Oregon. While Keystone is no longer the small "start up" we once were, our mission has remained true to Cole's vision—"Do the job right and make sure we deliver a quality product every time."



THE COMPLETE CHOICE

FOR MORE INFORMATION ON KEYSTONE RV VISIT
WWW.BIT.LY/10A00LK



SCAN ME

FOR MORE INFORMATION ON KEYSTONE RV COMPANY



Keystone RV Company



3561RL SHOWN IN SAND DOLLAR DECOR



MONTANA LUXURY FIFTH WHEEL

**ONE OF THE MOST
AWARDED BRANDS IN
THE INDUSTRY**

Montana was created in 1998 for the sole purpose of providing a high-quality, luxury fifth wheel at an affordable price. By listening to customers, Montana delivered a fifth wheel to lead the industry in quality, style, innovation and value. Experienced RVers responded to the painstaking details crafted into every square inch of every floor plan as Montana quickly revolutionized the fifth wheel market in the late 90's.

In 2001, Montana finished the year as the #1 selling fifth wheel brand in the United States for the first time and has remained the #1 selling luxury fifth wheel for 17 consecutive years.

Today, Montana continues to lead the industry in creating spacious, highly functional, durable and dependable luxury fifth wheels. Every Montana is crafted with the confidence that comes from 19 years of quality fifth wheel building expertise. We continue to raise both structural standards and customer expectations through our cutting-edge technology and handcrafted skills that put our manufacturing in a class by itself.

The future promises new and exciting developments to enhance the ultimate RVing experience that only a Montana can deliver. Montana's patent pending front cap windshield design is just the latest in a long history of innovation.

With over 100,000 Montana fifth wheels on the road today and the most repeat buyers of any towable brand in the industry, the Montana legacy continues to grow larger and larger year after year.



3561BEDROOM SHOWN IN SAND DOLLAR DECOR



MONTANA BEDROOM WARDROBE W/ WASHER DRYER PREP



TRUSTED RESULTS



LUXURY FIFTH WHEEL 17 CONSECUTIVE YEARS

MORE CUSTOMERS HAVE PURCHASED MONTANA FIFTH WHEELS



RVDA QUALITY CIRCLE A

RV DEALERS HAVE VOTE



3921FB LUXURY BATHROOM



3561RL SHOWN IN SAND DOLLAR DECOR



3921FB SHOWN IN COFFEE BEAN DECOR

Trust: state of being relied on. For over 19 years Montana has worked diligently to earn customers' trust. Through better design and better value, we continue to earn it!



AWARD RECIPIENT 13 YEARS

ED US TO RECEIVE THIS AWARD



OVER 100K | **MONTANA**
FIFTH WHEELS ON
THE ROAD TODAY

100,000TH MONTANA PRODUCED IN 2017

NO OTHER FIFTH WHEEL BRAND HAS ACHIEVED THIS MILESTONE

FLOORPLANS



WEIGHT	CC	HITCH	LENGTH*	HEIGHT	FRESH WATER	WASTE WATER	GRAY WATER	LPB
11935	4445	2385	35'	13' 5"	66	49	88	60

REAR LIVING | 3120RL | 3121RL

RV REFRIGERATOR | RES REFRIGERATOR



WEIGHT	CC	HITCH	LENGTH*
13126	3714	2840	39' 7"

REAR LIVING | 3126 | 3174

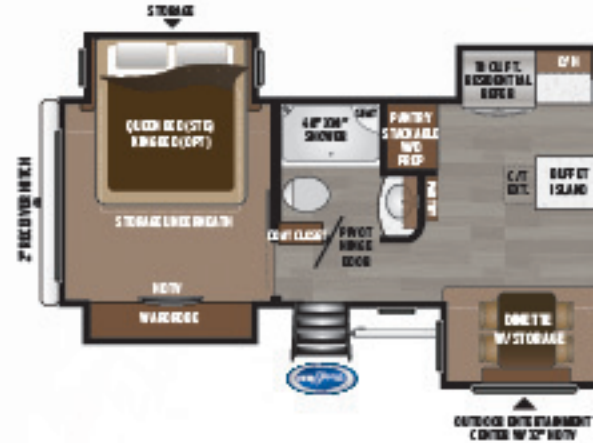
RV REFRIGERATOR | RES REFRIGERATOR



WEIGHT	CC	HITCH	LENGTH*	HEIGHT	FRESH WATER	WASTE WATER	GRAY WATER	LPB
12050	4350	2425	35' 2"	13' 5"	66	49	88	60

REAR ENTERTAINMENT | 3130RE

RV REFRIGERATOR



WEIGHT	CC	HITCH	LENGTH*
13348	3332	2680	39' 8"

FRONT LIVING | 31348 | 3332 | 2680

RV REFRIGERATOR



WEIGHT	CC	HITCH	LENGTH*	HEIGHT	FRESH WATER	WASTE WATER	GRAY WATER	LPB
12915	3685	2605	38' 5"	13' 5"	66	49	88	60

REAR LIVING | 3560RL | 3561RL

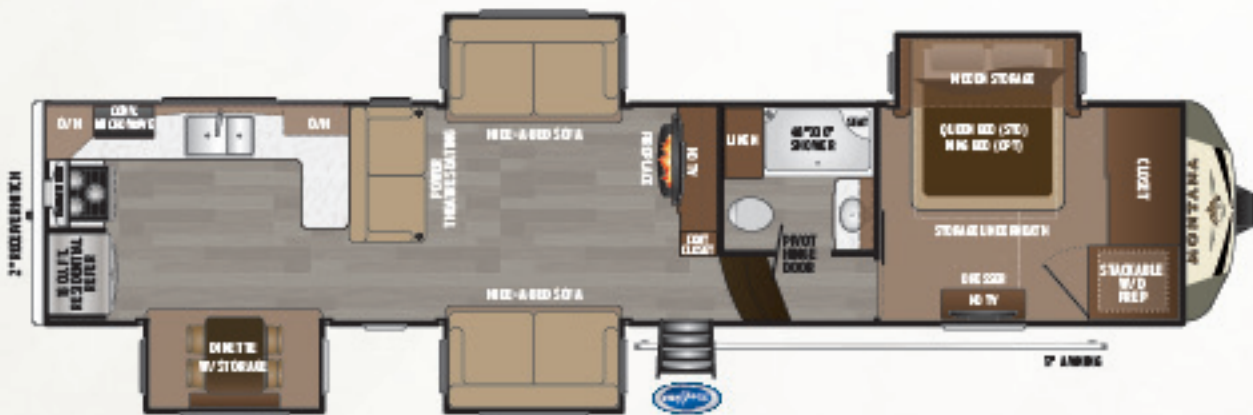
RV REFRIGERATOR | RES REFRIGERATOR



WEIGHT	CC	HITCH	LENGTH*
13900	2930	2835	40' 5"

REAR DEN | 31900 | 2930 | 2835

RV REFRIGERATOR



WEIGHT	CC	HITCH	LENGTH*	HEIGHT	FRESH WATER	WASTE WATER	GRAY WATER	LPB
13120	3380	2515	40' 6"	13' 5"	66	49	88	60

LUXURY KITCHEN | 3700LK | 3701LK

RV REFRIGERATOR | RES REFRIGERATOR

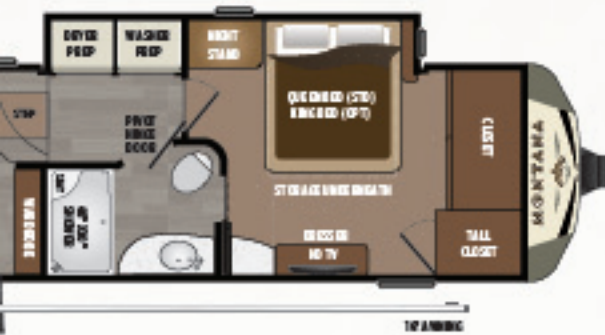


WEIGHT	CC	HITCH	LENGTH*
13573	3132	2705	40' 9"

MASTER SUITE | 313573 | 3132 | 2705

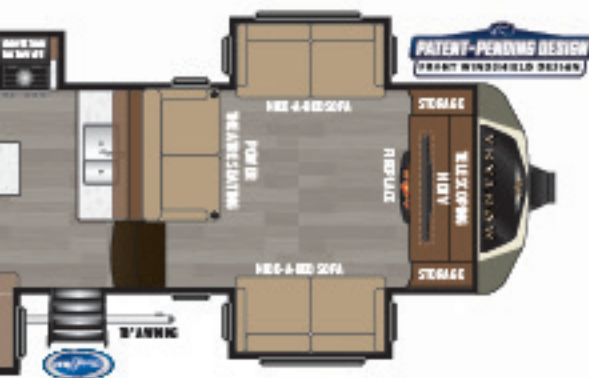
RV REFRIGERATOR

AN LINEUP



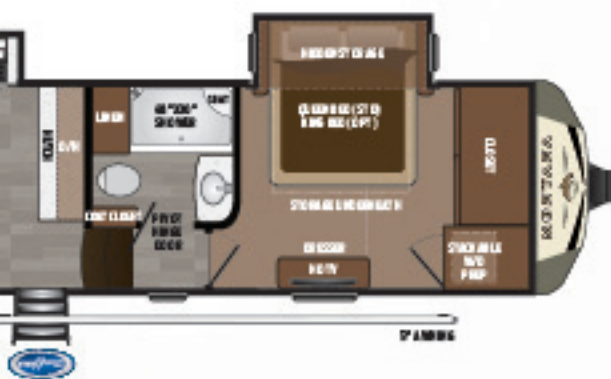
HEIGHT	FRESH WATER	WASTE WATER	GRAY WATER	LPG
13' 5"	66	49	88	60

720RL | **3721RL**
REFRIGERATOR | RES REFRIGERATOR



HEIGHT	FRESH WATER	WASTE WATER	GRAY WATER	LPG
13' 5"	66	39	78	60

730FL | **3731FL**
REFRIGERATOR | RES REFRIGERATOR



HEIGHT	FRESH WATER	WASTE WATER	GRAY WATER	LPG
13' 5"	66	49	88	60

790RD | **3791RD**
REFRIGERATOR | RES REFRIGERATOR



HEIGHT	FRESH WATER	WASTE WATER	GRAY WATER	LPG
13' 5"	66	49	88	60

810MS | **3811MS**
REFRIGERATOR | RES REFRIGERATOR



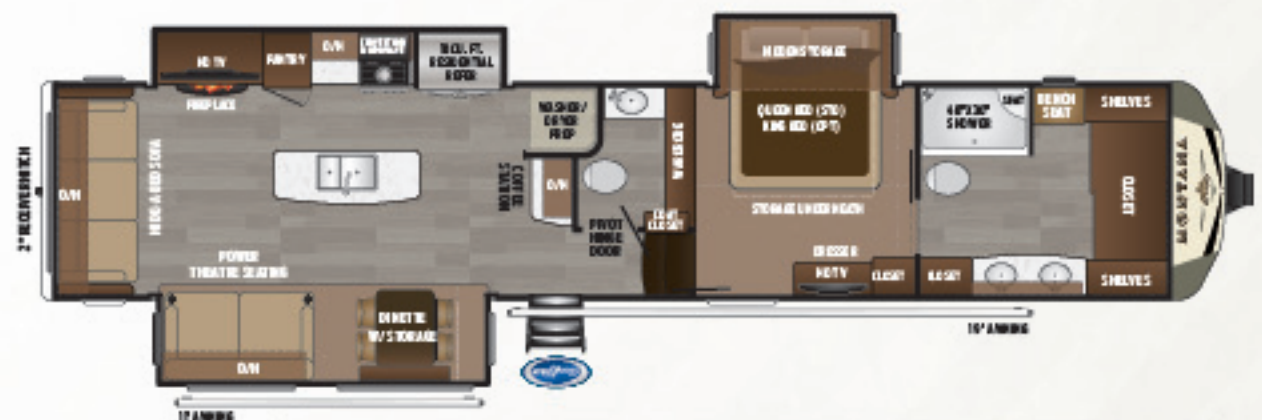
WEIGHT	CC	HITCH	LENGTH*	HEIGHT	FRESH WATER	WASTE WATER	GRAY WATER	LPG
13092	3718	2810	40' 9"	13' 5"	66	39	78	60

FRONT KITCHEN | **3820FK** | **3821FK** RV REFRIGERATOR



WEIGHT	CC	HITCH	LENGTH*	HEIGHT	FRESH WATER	WASTE WATER	GRAY WATER	LPG
13710	3135	2845	41' 4"	13' 5"	54	88	88	60

FRONT BATH | **3920FB** | **3921FB** RV REFRIGERATOR



WEIGHT	CC	HITCH	LENGTH*	HEIGHT	FRESH WATER	WASTE WATER	GRAY WATER	LPG
13470	3130	2610	41' 5"	13' 5"	66	88	88	60

FRONT BATH | **3930FB** | **3931FB** RV REFRIGERATOR



WEIGHT	CC	HITCH	LENGTH*	HEIGHT	FRESH WATER	WASTE WATER	GRAY WATER	LPG
13680	3205	2765	40' 5"	13' 5"	66	49	88	60

BONUS ROOM | **3950BR** RV REFRIGERATOR

MONTANA

LUXURY FIFTH WHEEL

LUXURY THAT STARTS WITH A SOLID FOUNDATION

MONTANA SETS THE STANDARD IN FIFTH WHEEL CONSTRUCTION. NO OTHER BRAND OFFERS YOU THIS SOLID FOUNDATION

- 01 EXCLUSIVE COLOR CODED WIRING
- 02 RESIDENTIAL HEAT-DUCT SYSTEM
- 03 SUPERCHARGED A/C COOLING SYSTEM
- 04 6 LAYERS OF CAP PROTECTION
- 05 TRUE-FIT SLIDE TECHNOLOGY
- 06 EXCLUSIVE ROAD ARMOR SUSPENSION
- 07 4 STAGE QUALITY CONTROL PROCESS
- 08 WARRANTY FOR FULL TIME RVING
- 09 ZERO DEGREE TESTED & RATED
- 10 INDUSTRY'S BEST 3 YEAR WARRANTY

02 IN-FLOOR RESIDENTIAL HEAT-DUCTS



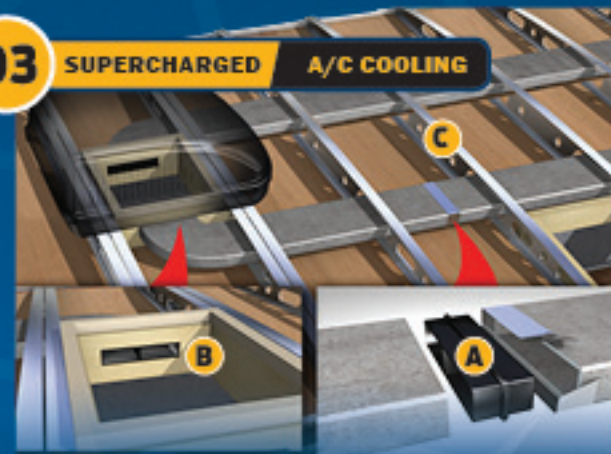
MONTANA

COMPETITOR

RESIDENTIAL IN-FLOOR HEAT-DUCT SYSTEM JUST LIKE IN YOUR HOME

- A. In-floor, hot air vents spaced for greatest comfort, distributes heat evenly and warms the floor
- B. Competitors heat vent locations are determined by cabinets, causing hot and cold spots. Hot air is supplied through restrictive hoses.

03 SUPERCHARGED A/C COOLING



TUF-LOK THERMOPLASTIC COUPLERS FORM A PERMANENT, CRUSH-RESISTANT SEAL IN YOUR AIR-CONDITIONING DUCT

- A. Securely joins ductwork and air-conditioning units, crush-resistant design won't pull apart due to rough roads, heat and stress
- B. Drastically reduces chilled-air leaks to boost cooling efficiency and comfort
- C. Circular racetrack style ducting improves performance over competitors that use "Figure 8" style that causes additional resistance and turbulence.

01 WIRED FOR PERFORMANCE



THE ONLY TOWABLE MANUFACTURER TO INCORPORATE COLOR-CODED AND NUMBERED ELECTRICAL WIRING ON ALL PRODUCTS

- Creates a clean, well organized wiring layout
- Makes it easy to trace electrical circuits and saves troubleshooting time

04 6 LAYERS OF PROTECTION



MONTANA CAPS ARE FULLY PAINTED AND CLEAR-COATED IN OUR IN-HOUSE STATE OF THE ART PAINT FACILITY

- Backed by 3-year fade and chalk limited warranty
- With optional Full Body Paint, KeyGuard chip and rock protection is applied to the lower front area

05 TRUE-FIT SLIDE TECHNOLOGY



TRU-FIT FIVE-POINT SLIDE ROOM CONSTRUCTION BACKED BY THE INDUSTRY'S-BEST 3-YEAR LIMITED STRUCTURAL WARRANTY

- Rain channels direct rain away from the slide openings
- Exterior bulb-seals in a locking track stay secure through extreme heat and cold
- Composite slide-room "glide" bar enables the room to move with no binding
- Reinforced roof, walls and floor
- Beefed-up aluminum header above slide room for greater strength

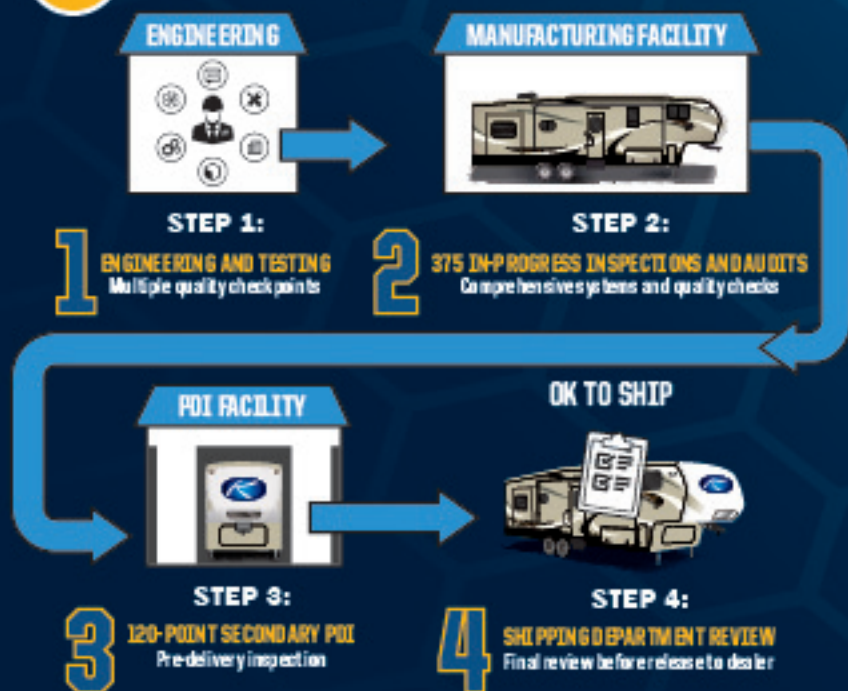
06 ROAD ARMOR SUSPENSION



KEYSTONE EXCLUSIVE ROAD ARMOR SUSPENSION

- 360 degrees of anti-shock protection
- 6 total inches of travel for unparalleled protection
- During testing, Road Armor decreased chatter by 31.7%

07 BEST-IN-INDUSTRY 4 STAGE QUALITY PROCESS



08 FULL TIME RVING

WARRANTY FOR FULL TIME RVING*

WARRANTY FOR FULL TIME RVING

- There are more full time Montana campers on the road than any other towable brand in North America. With the most efficient, well developed warranty, parts and service group, Keystone RV provides unprecedented support and confidence to all Keystone brand customers.
- *REFERENCE KEYSTONE RV COMPANY OWNERS MANUAL FOR LIMITED WARRANTY DETAILS

09 ZERO DEGREE TESTED & RATED



ZERO DEGREE TESTED & RATED

ZERO DEGREE TESTED & RATED

- The industry leader in four season fifth wheel capabilities, Montana has been tested and approved for zero degree usage since 2005.
- Montana's Radiant technology insulation combined with Astro-Foil technology and 12 volt Fresh/Gray/Black tank heaters, Montana provides the ultimate in Four Season usage.

10 INDUSTRY'S BEST 3 YEAR WARRANTY



INDUSTRY'S BEST 3 YEAR LIMITED STRUCTURAL WARRANTY

- The limited structural warranty covers your rv for a period of three (3) years from the date of purchase by the original owner. (SEE WARRANTY SHEET FOR COMPLETE DETAILS)



STANDARDS & OPTIONS

● - STANDARD FEATURE

◆ - RESIDENTIAL LIVING PACKAGE

■ - FOUR SEASON LIVING PACKAGE

LIVING AREA FEATURES	
● HIDDEN CABINET HINGES	
● SOLID HARDWOOD SLIDEOUT FASCIA	
● 6' 6" TALL MAIN SLIDE-OUTS	
● FRONT TO REAR INTERIOR VAULTED CEILING	
● CEILING CROWN MOLDING WITH LED LIGHTING	
● SHAW CARPET WITH R2X PROTECTION	
● ARMSTRONG FLOORING WITH 3 YEAR COLD CRACKING WARRANTY	
◆ FLUSH MOUNTED LED INTERIOR LIGHTS	
◆ ROLLER SHADES	
◆ TRI-FOLD HIDE-A-BED SOFA	
◆ THEATER SEATING WITH POWER RECLINERS	
KITCHEN FEATURES	
● 18 CUBIC FOOT 4 DOOR RV REFRIGERATOR (3120, 3130, 3560, 3700, 3720, 3730, 3790, 3810, 3820, 3920, 3930, 3950)	
● FULL EXTENSION DRAWER GUIDES	
● PULL OUT KITCHEN TRASH CAN (MOST MODELS)	
● TUMBLED STONE BACKSPLASH	
◆ SOLID SURFACE KITCHEN COUNTERTOPS	
◆ SOLID SURFACE FLUSH MOUNT SINK COVERS	
◆ SINK COVER STORAGE BELOW KITCHEN SINK	
◆ 30" OVER-THE-RANGE CONVECTION/MICROWAVE OVEN	
◆ FURRION® RV CHEF COLLECTION 9000 BTU OVEN WITH AUTO-IGNITE	
◆ FURRION® RV CHEF COLLECTION COOKTOP	
◆ WALL MOUNTED FREE STANDING DINETTE WITH (2) FIXED AND (2) FOLDING CHAIRS (OPTIONAL 3820)	
◆ CENTRAL VACUUM WITH INTERIOR AND EXTERIOR PORTS PLUS TOE KICK SWEEP	
■ POWER VENT FAN WITH RAIN SENSOR	
HOME ENTERTAINMENT	
● DVD/CD/MP3 ENTERTAINMENT SYSTEM WITH BLUETOOTH	
● MARINE GRADE EXTERIOR SPEAKERS	
◆ RG-6 SATELLITE PREP	
◆ WINEGARD RAYZAR Z-1 HD DIGITAL TV ANTENNA	
◆ 48"/50" HD LED TV IN LIVING AREA	
◆ 32" HD LED TV IN BEDROOM	
BEDROOM FEATURES	
● 60" X 80" QUEEN BED	
● QUILTED HEADBOARD	
● READING LIGHTS OVER BED	
● MASSIVE STORAGE UNDER BED	
● WOOD TV CABINET	
◆ IRELAX HIGH DENSITY MATTRESS	
◆ (2) BEDSIDE ELECTRICAL OUTLETS	
◆ BEDSIDE NIGHT STANDS	
◆ PREPPED FOR COMBO OR STACKABLE WASHER/DRYER WITH SEPARATE 20AMP CIRCUITS FOR EACH APPLIANCE	
◆ MAGNETIC BEDROOM DOOR HOLDER	
BATHROOM FEATURES	
● SKY LIGHT OVER SHOWER	
● 12 GALLON DSI GAS/ELECTRIC WATER HEATER WITH 16.2 GAL. PER HR. FAST RECOVERY	
● UNDERMOUNT SINK	
● SOLID SURFACE COUNTERTOP	
● (3) DRAWERS (1) DOOR VANITY (MOST MODELS)	
● BRUSHED NICKEL SHOWER HEAD AND FAUCET	
◆ SEAMLESS 48" X 30" FIBERGLASS SHOWER	
◆ PORCELAIN FOOT FLUSH TOILET	
◆ 50AMP SERVICE	
◆ 75AMP CONVERTER	
■ POWER VENT FAN WITH RAIN SENSOR	
CONSTRUCTION FEATURES	
● UNIFIED WIRING STANDARD: EACH WIRE COLOR-CODED AND NUMBERED	
● 5" ARCHED ROOF RAFTERS	
● WELDED ALUMINUM FRAMED WALLS AND FLOORS	
● LAMINATED SIDE WALLS WITH DUAL LAYERED LUAN AND METAL BACKING STRIPS TO ANCHOR INTERIOR CABINETS	
● SEAMLESS 5/8" THICK DYNASpan® FLOOR DECKING	
● POWDER COATED 12" STEEL I-BEAM FRAME	
● SEAMLESS ROTO-CAST HOLDING TANKS	
FOUR SEASONS FEATURES	
■ 35,000 BTU FURNACE	
■ 3"X14" RESIDENTIAL IN-FLOOR STRAIGHT LINE HEAT DUCT SYSTEM	
■ 30,000 BTU AIR CONDITIONING SYSTEM	
■ DUAL WHISPER QUIET AIR CONDITIONER SYSTEM	
■ WIRED AND FRAMED FOR 3RD AIR CONDITIONER	
■ 16,500 BTU HEAT PUMP ON MAIN AIR CONDITIONER	

■ ZERO DEGREE TESTED AND RATED	
■ TWO ATTIC VENTS FOR CROSS VENTILATION	
■ R-38 EQUIVALENT INSULATED ROOF	
■ R-21 INSULATED FLOOR	
■ R-15 INSULATED SLIDE OUT FLOORS	
■ R-11 INSULATED SIDEWALLS	
■ INSULATED AND HEATED HOLDING TANKS AND DUMP VALVES	
■ INSULATED IN-FLOOR WATER LINES	
■ ENCLOSED AND HEATED LOW POINT DRAINS	
■ 12V ELECTRIC TANK HEATERS	
■ RESIDENTIAL CEILING FAN	
■ 48" LED FIREPLACE 5110 BTU	
TOWING FEATURES	
● PATENTED MAX TURN™ FRONT CAP AND RADIUS FRAME WITH HITCH VISION™	
● ROAD ARMOR / TRAIL AIR PIN BOX	
● PREPPED FOR REAR VIEW CAMERA	
● ROAD ARMOR SUSPENSION	
● G-RANGE TIRES	
● HEAVY DUTY WET BOLT KIT WITH BRONZE BUSHINGS AND 1/2" SHACKLE LINKS	
● 16" 8-LUG ALUMINUM WHEELS (110 PSI)	
● 7000 LB DEXTER E-Z LUBE AXLES WITH SELF ADJUSTING BRAKES	
● BACK-UP LIGHTS	
● UNDERMOUNT SPARE TIRE AND CARRIER	
EXTERIOR FEATURES	
● AUTOMOTIVE PAINT WITH 2 LAYERS OF CLEAR COAT ON FRONT CAP	
● HIGH GLOSS GEL COATED SIDE WALLS AND REAR WALL	
● AUTOMOTIVE FRAMELESS SAFETY GLASS WINDOWS	
● EXTRA LARGE FOLD AWAY ENTRY HANDLE	
● REAR ROOF LADDER	
● SLAM LATCH PASS THRU STORAGE COMPARTMENT DOORS	
◆ EXTRA LARGE (30" WIDE BY 78" TALL) ENTRY DOOR WITH FRICTION HINGE AND INTEGRATED WINDOW SHADE	
◆ ENORMOUS DROP FRAME PASS THRU STORAGE COMPARTMENT	
◆ MORRYDE "STEP ABOVE" ENTRY STEPS WITH STRUT ASSIST	
EASY SET UP FEATURES	
● 12V ELECTRIC PATIO AWNING WITH LED LIGHTS	
● 2ND 12V ELECTRIC PATIO AWNING WITH LED LIGHTS ON SLIDE-OUT (3120, 3121, 3130, 3131, 3720, 3721, 3810, 3811, 3920, 3921, 3930, 3931, 3950)	
● PATIO SECURITY LIGHT	
● HEATED CENTRAL EXTERIOR WATER AND CONVENIENCE CENTER	
• OUTSIDE SHOWER WITH QUICK CONNECT HOSE	
• BLACK TANK FLUSH	
• EASY WINTERIZATION KIT	
• WATER HEATER BYPASS	
• POWER TANK FILL	
• ENCLOSED LOW POINT DRAINS	
• BATTERY DISCONNECT	
• CABLE/SATELLITE HOOK-UPS	
• 12V LIGHT	
OPTIONS	
INTERIOR OPTIONS	
KING BED	
RESIDENTIAL FRENCH DOOR REFRIGERATOR WITH ICE MAKER AND 1000 WATT INVERTER (3121, 3131, 3561, 3701, 3721, 3731, 3791, 3811, 3921, 3931)	
HI BACK DESK CHAIR WITH STEP LADDER (3560, 3561, 3950 ONLY)	
3820 ONLY: WALL MOUNTED FREE STANDING DINETTE WITH (2) FIXED AND (2) FOLDING CHAIRS IN PLACE OF BOOTH DINETTE (3820 ONLY)	
EXTERIOR OPTIONS	
OUTSIDE ENTERTAINMENT CENTER WITH 32" HD LED TV (MANDATORY OPTION): N/A 3820	
6 POINT HYDRAULIC AUTOMATIC LEVELING SYSTEM (MANDATORY OPTION)	
DUAL PANE FRAMELESS WINDOWS	
SLIDEOUT AWNINGS PACKAGE	
GENERATOR READY (ONAN 5.5 KW SPECIFICATIONS)	
ONAN MARQUIS GOLD 5.5 KW LP GENERATOR	
ROOF MOUNTED SOLAR PREP (MANDATORY OPTION)	
FULL BODY PAINT: SAHARA STONE OR EARTHEN SLATE (LEGACY MANDATORY)	
MONTANA LEGACY EDITION PACKAGE (OPTIONAL)	
SHORELINE® LOW PROFILE POWER CORD REEL (N/A 3130)	
WIRELESS REAR VIEW CAMERA WITH IN VEHICLE MOBILE DISPLAY	
KEYSTONE IN-COMMAND CONTROL SYSTEM	
SOLID HARDWOOD CABINET FRAMING	
REAR FIBERGLASS CAP WITH AUTOMOTIVE PAINT AND 2 LAYERS OF CLEAR COAT (N/A 3700, 3701, 3790, 3791)	
DAY AND NIGHT ROLLER SHADES IN LIVING AREA (NIGHT ROLLER SHADES IN BEDROOM AND HALLWAY)	

LEGACY EDITION

OPTIONAL UPGRADE PACKAGE

Relax. You're iN-Command™

- Never lose your controller
- Multiple Users
- When you have your phone, you're iN-Command

Display Command™

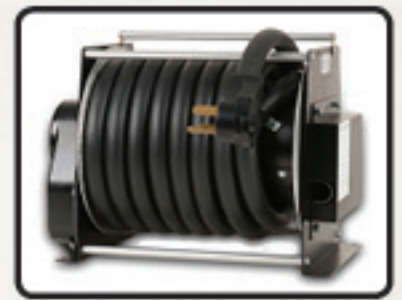
FINALLY A SYSTEM YOU CAN TRUST.



HARDWOOD
CHERRY CABINET FRAMING (STILES)



DECORATIVE FIBERGLASS REAR CAP
(N/A 3700, 3701, 3790, 3791)



SHORELINE POWER CORD
REEL (N/A 3130RE)



iN-COMMAND CONTROL SYSTEMS



WIRELESS REAR VIEW
CAMERA SYSTEM



UPGRADE DAY/NIGHT ROLLER SHADES
(LIVING ROOM ONLY)

MONTANA KEY FEATURES



2" RECEIVER HITCH WITH 300 LB CAPACITY
FOR YOUR ACCESSORIES



6 RANGE TIRES AND DEXTER AXLES WITH
NEV-R-ADJUST BRAKES



BACKUP LIGHTS PROVIDING ADDITIONAL
SAFETY AND SECURITY



CHAIR BUDDY ALLOWING YOU TO EASILY
SECURE YOUR CHAIRS FOR TRAVEL



PATENTED HITCH VISION MIRROR TO ASSIST
IN YOUR HITCH CONNECTION



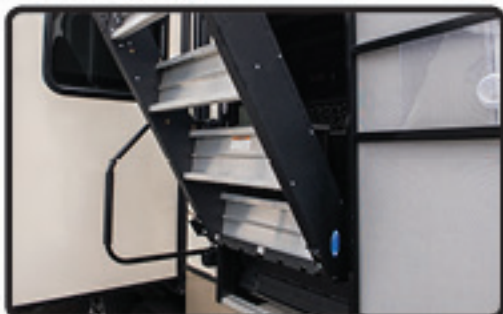
RESIDENTIAL CEILING FAN PROVIDING
NATURAL AIR MOVEMENT



78" TALL ENTRY DOOR WITH INTEGRATED
WINDOW SHADE



FURRION OVEN AND COOKTOP FOR BETTER
COOKING RESULTS



MOR RYDE STEP ABOVE WITH STRUT ASSIST
GIVING YOU A ROCK-SOLID ENTRY



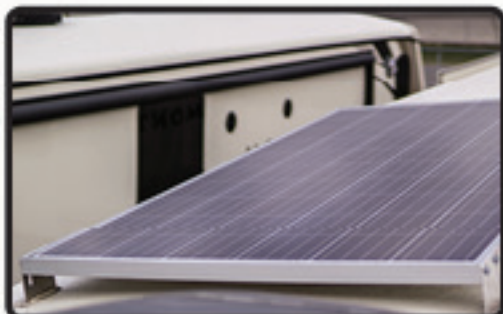
PIVOT HINGE BATHROOM DOOR ALLOWING
PASSAGE WHILE DOOR IS OPEN



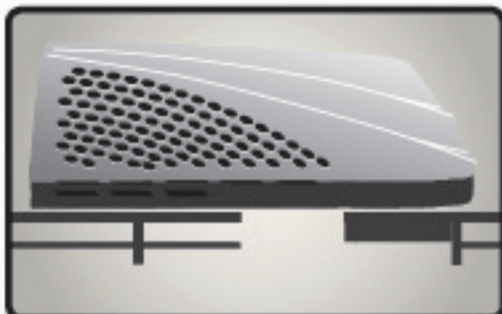
HEAT PUMP MAIN A/C PROVIDING HEAT
WITHOUT BURNING YOUR LPG



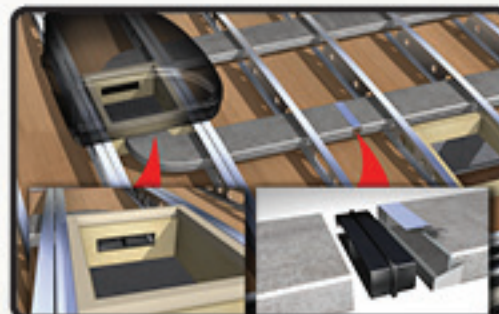
INDOOR/OUTDOOR CENTRAL VACUUM
SYSTEM WITH HOSE AND ATTACHMENTS



ROOF SOLAR PREP ALLOWING YOU TO ADD
THE SOLAR PANELS WITH EASE



WIRED AND FRAMED FOR 3RD A/C JUST
IN CASE IT'S NEEDED



DUAL 15K QUIET COOL AIR CONDITIONING
SYSTEM WITH SUPERCHARGED DUCTING



KITCHEN AND BATHROOM POWER RAIN SENSOR
VENT FAN WITH MULTISPEED WALL CONTROL

MONTANA FULL PAINT OPTIONS



MAKE A STATEMENT WITH OPTIONAL

FULL BODY PAINT

AVAILABLE IN TWO EXCITING COLOR SCHEMES



MONTANA
WWW.KEYSTONERV.COM/MONTANA



Go RVing.

Member
RVIA
RECREATION VEHICLE
INDUSTRY ASSOCIATION



DISCLAIMER: Product information is as accurate as possible as of the date of publication of this brochure. All features, floor plans, and specifications in this brochure are subject to change without notice. Please also consult Keystone's web site at www.keystonerv.com for more current product information and specifications. Tow Vehicle Disclaimer. CAUTION: Owners of Keystone recreational vehicles are solely responsible for the selection and proper use of tow vehicles. All customers should consult with a motor vehicle manufacturer or their dealer concerning the purchase and use of suitable tow vehicles for Keystone products. Keystone disclaims any liability or damages suffered as a result of the selection, operation, use or misuse of a tow vehicle. KEYSTONE'S LIMITED WARRANTY DOES NOT COVER DAMAGE TO THE RECREATIONAL VEHICLE OR THE TOW VEHICLE AS A RESULT OF THE SELECTION, OPERATION, USE OR MISUSE OF THE TOW VEHICLE. REFERENCE KEYSTONE RV COMPANY OWNERS MANUAL FOR LIMITED WARRANTY DETAILS. *Length is defined as the distance from the centerline of hitch pin/coupler to rear bumper of trailer.

YOUR LOCAL DEALER IS:

JANUARY 2018

BUILT BY EXPERIENCE

OVER 100,000 MONTANA FIFTH WHEELS ON THE ROAD TODAY

KEYSTONERV.COM/MONTANA || 