

RAZORBACK

Razorback Standards & Options

Exterior

- Steel Loops on Chassis for Outside Security Lock
- Dual Battery Tray
- Front Cargo/Generator Rack
- Oversized Exterior Storage Compartments
- Cargo Ramp Loading Lights
- Rear Security/Work Lights
- Black Trim Windows w/Tinted Safety Glass
- Diamond Plate Rock Guard
- Radius Entry Door
- Triple Entry Steps
- Keyed Ramp Door Latches
- 2" Quick Release Dump Valve on Fresh Water Tank
- Fiberglass Skin Upgrade (2550, 2650, 2950)

Garage

- 7' Insulated Bottom Hinged Spring Assisted Ramp Door
- Tuff-Ply Gas/Oil Resistant Dovetail Flooring
- Metal Ram Air Vents
- Fuel Station w/12V Pump, 30 GAL Fuel Tank & Static Line
- 2,500 LB Tie Down Rings
- Dovetail Rear Entry
- Flat Floor Design – No Wheel Wells

Options

- Onan® 4.0 KW Generator w/Start/Stop Switch, Hour Meter & Fuel Gauge
- 15,000 BTU AC Upgrade
- Fiberglass Skin Upgrade (1950 & 2150)
- Razorback Logo Chair
- 2 Razorback Logo Chairs IPO Sit-n-Sleep Dinette (2650)



Scan our quick response code to open our website, and explore the many products we have to offer!



Check us out on Facebook!



Equipment

- Heavy-Duty Axles
- (4) 12" Electric Brakes
- Electric Power Awning w/Adjustable Legs
- Radial Tires
- 6 GAL LP/Electric Water Heater w/DSI
- 30 AMP Service w/Power Cord
- 55 AMP Converter
- Black Tank Flush
- Forced Air Furnace
- Dual 7.5 GAL (30 LB each) LP Tanks w/Cover
- Front & Rear Stabilizer Jacks
- Rear Screen Wall
- Aluminum Wheels (16" – 2950)
- Spare Tire w/Carrier (16" – 2950)
- Electric Bed Lift w/Top Bed, Flip Up Bottom Sofa Sleeper & Ladder (N/A 1950 & 2150)

Construction

- 102" Wide Body
- I-Beam Chassis (8" – 1950, 2150, 2650) (10" – 2950)
- Steel Reinforced Garage Floor
- 7/8" One-Piece Floor Decking (main floor)
- 5" Trussed Roof
- Fiberglass Insulation in Roof, Floor & Walls
- 1" Thick Insulated Baggage Doors
- Heated & Enclosed Water Tanks



2650 Exterior Storage

Interior

- Jensen Stereo w/AM/FM/CD/DVD/Player w/AUX, 4 Interior Speakers, 2 Exterior Marine Speakers
- Speaker Upgrade w/Powered Subwoofer (N/A 1950)
- 13,500 BTU Ducted AC (1950 non-ducted)
- LCD HDTV w/Outside Entertainment Bracket (19"– 1950, 2150) (24"– 2650) (32"– 2950, 2550)
- Razorback Central Command Center
- 12V Disconnect Switch
- 6 CU FT LP/Electric Refrigerator w/Black Front Panel (1950)
- 8 CU FT Refrigerator Upgrade (N/A 1950)
- 3-Burner Range
- Fantastic Fan in Kitchen
- Microwave/Convection Oven
- Bottle Opener in Kitchen
- Kitchen Sink Cover
- Hardwood Cabinet Doors
- Residential Cabinet Hardware
- Overhead Cargo Netting
- Laundry Chute in Bedroom (N/A 1950 & 2550)
- Custom Razorback Foldaway Furniture
- Foot Flush Toilet
- Puck Lighting above Cabinets
- Metal Drawer Guides
- Hard Lambrequin Window Treatments
- Multiple Cable TV Connections
- Directional Digital TV Antenna
- Metal Blinds
- Shower/Tub Surround
- Skylight over Shower/Tub
- Power Bathroom Exhaust Fan
- Mirrored Medicine Cabinet
- Oversized Tinted Safety Glass Windows
- Up to 17' of Cargo Space



Fueling Station

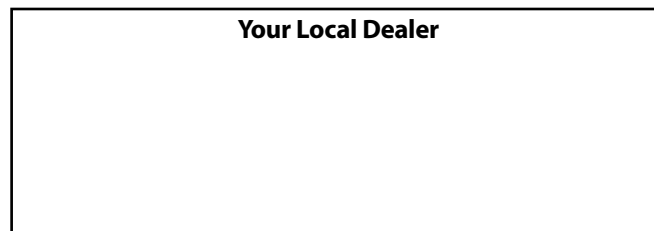


Aluminum Wheels



Dutchmen www.Dutchmen.com

Your Local Dealer



REV 5.14 © Thor Industries, Inc.

RAZORBACK



Model 2650

Disclaimer: Product information is as accurate as possible as of the date of publication of this brochure. Features, floorplans and specifications are subject to change without notice. Please also consult our website for more current product information and specifications.

Tow Vehicle Disclaimer CAUTION: Owners of Dutchmen Manufacturing, Inc., recreational vehicles are solely responsible for the selection and proper use of tow vehicles. All customers should consult with a motor vehicle manufacturer or their dealer concerning the purchase and use of suitable tow vehicles for Dutchmen products. Dutchmen disclaims any liability or damages suffered as a result of the selection, operation, use or misuse of a tow vehicle. Dutchmen's limited warranty does not cover damage to the recreational vehicle or the tow vehicle as a result of the selection, operation, use or misuse of the tow vehicle.

Dutchmen Manufacturing, Inc. PO Box 2164 • 2164 Caragana Court Goshen, Indiana 46527 • Sales: (574) 533-0996

www.Dutchmen.com

RAZORBACK

Razorback has a floorplan to suit every family activity!

Razorback's interior creature comforts include an LCD TV with outside entertainment bracket, large refrigerator, 3-burner range, great seating, hardwood cabinet doors, thoughtful lighting placement, and even a laundry chute in the bedroom!



2150 Sahara Decor

Razorback offers the best way we know for your family and friends to connect while enjoying the great outdoors! From its practical, no-nonsense design and comfy interiors to its unlimited versatility, Razorback offers something for everyone.



2150



2150



2650 Sahara Decor



2650



2650

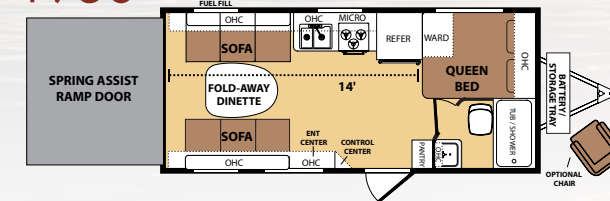
Our functional garage areas offer a variety of living accommodations, from hauling toys and a fantastic play area for the kids, a family room or even a second bedroom. And no matter which model you choose, all are towable by half-ton vehicles.

Kid-proof fabrics, generous counter and storage spaces and attention to detail will make your family's total camping experience that much more rewarding. Razorback's 8' 5" wide body is supported by a rugged 8-to 10-inch I-beam chassis and heavy-duty axles.

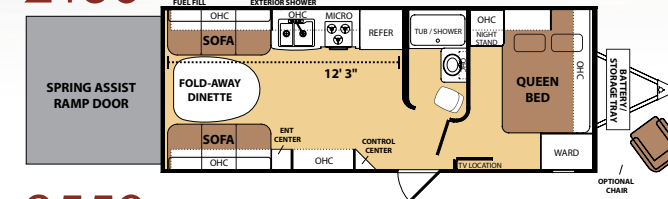


2650

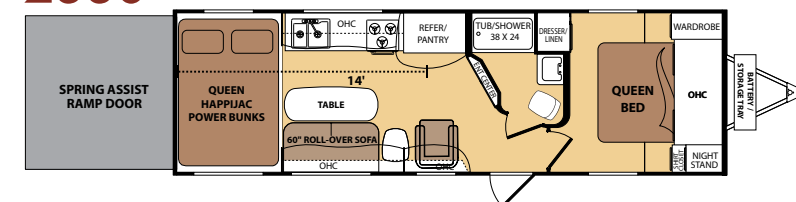
1950



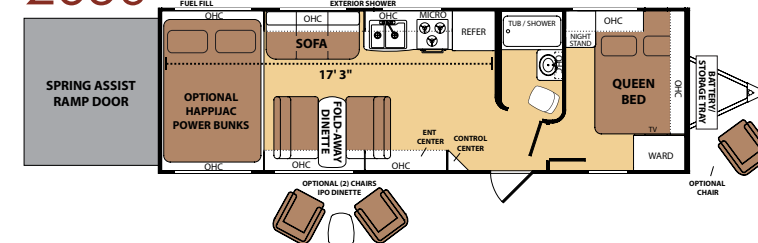
2150



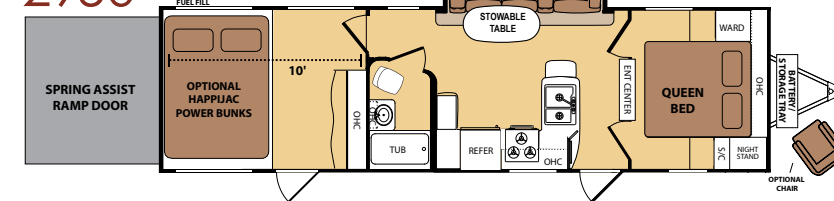
2550



2650



2950



Specifications

1950
 Avg Ship Wt5,834 Length24' 8"
 Hitch Weight 817 Fresh Water Capacity ...*82
 Cargo Capacity3,166 Black Water Capacity42
 Height11' 8" Grey Water Capacity42

2150
 Avg Ship Wt6,759 Length26' 1"
 Hitch Weight 946 Fresh Water Capacity ...*92
 Cargo Capacity2,741 Black Water Capacity42
 Height12' 1" Grey Water Capacity42

2550 **NEW!**
 Avg Ship Wt 7,908 Length31' 6"
 Hitch Weight 1,187 Fresh Water Capacity ...*82
 Cargo Capacity 3,092 Black Water Capacity 42
 Height11' 11" Grey Water Capacity 42

2650
 Avg Ship Wt7,833 Length31' 1"
 Hitch Weight1,096 Fresh Water Capacity ...*92
 Cargo Capacity3,167 Black Water Capacity42
 Height12' 1" Grey Water Capacity42

2950
 Avg Ship Wt9,336 Length34' 8"
 Hitch Weight1,588 Fresh Water Capacity ...*92
 Cargo Capacity4,164 Black Water Capacity42
 Height12' 3" Grey Water Capacity42

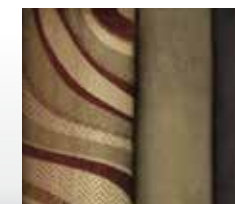
*Fresh water capacity includes water heater

Disclaimer: Features, floorplans and specifications are subject to change without notice. Our weights represent how most units are built, inclusive of many commonly-ordered options.

Decor Choices



Desert



Sahara

RAZORBACK
www.Dutchmen.com